

**Issue:**

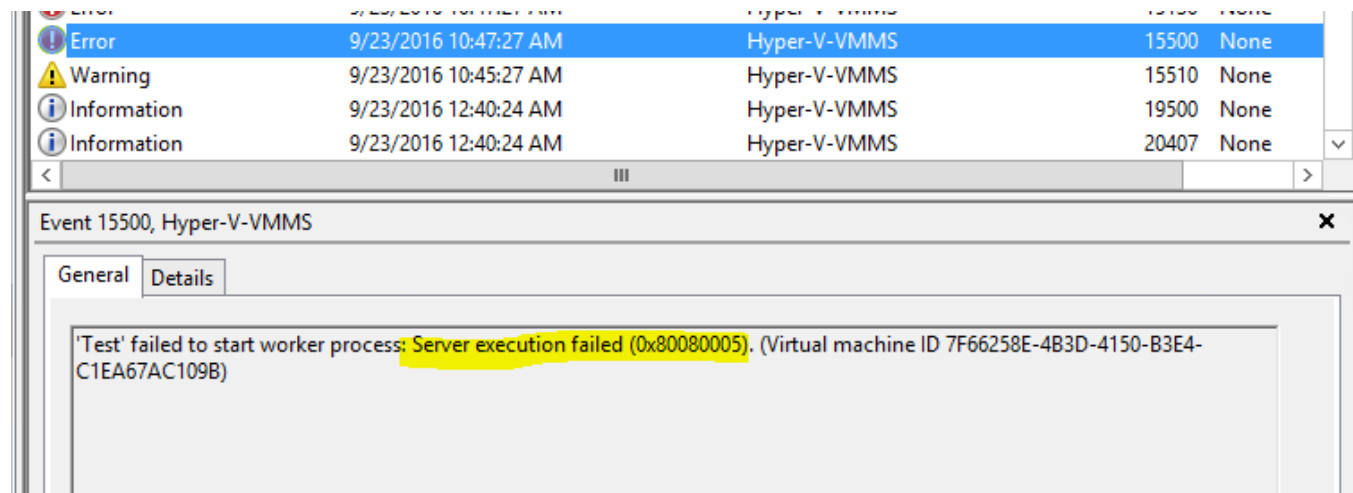
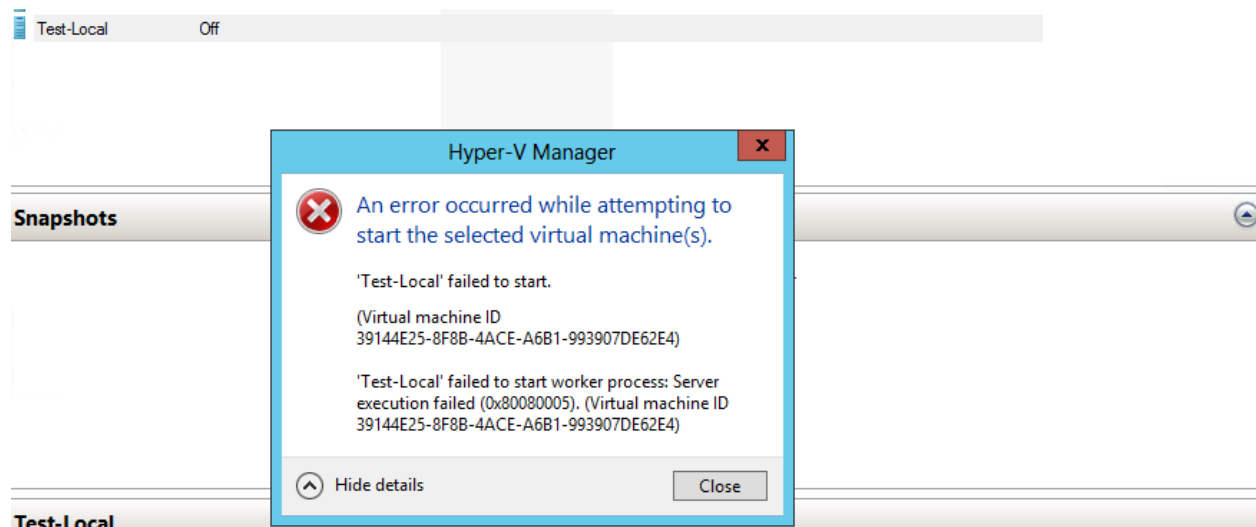
Unable to Start any VM in one of the Hyper-V node cluster (Windows Server 2012).

**Error Messages Seen:**

Virtual Machine "TEST" failed to start worker process: "server execution failed (0x80080005)"

The Worker process for a virtual machine "Test" failed to respond within the startup timeout period and was restarted. Virtual Machine id 7FXXXXXXX

**Error Screenshots**





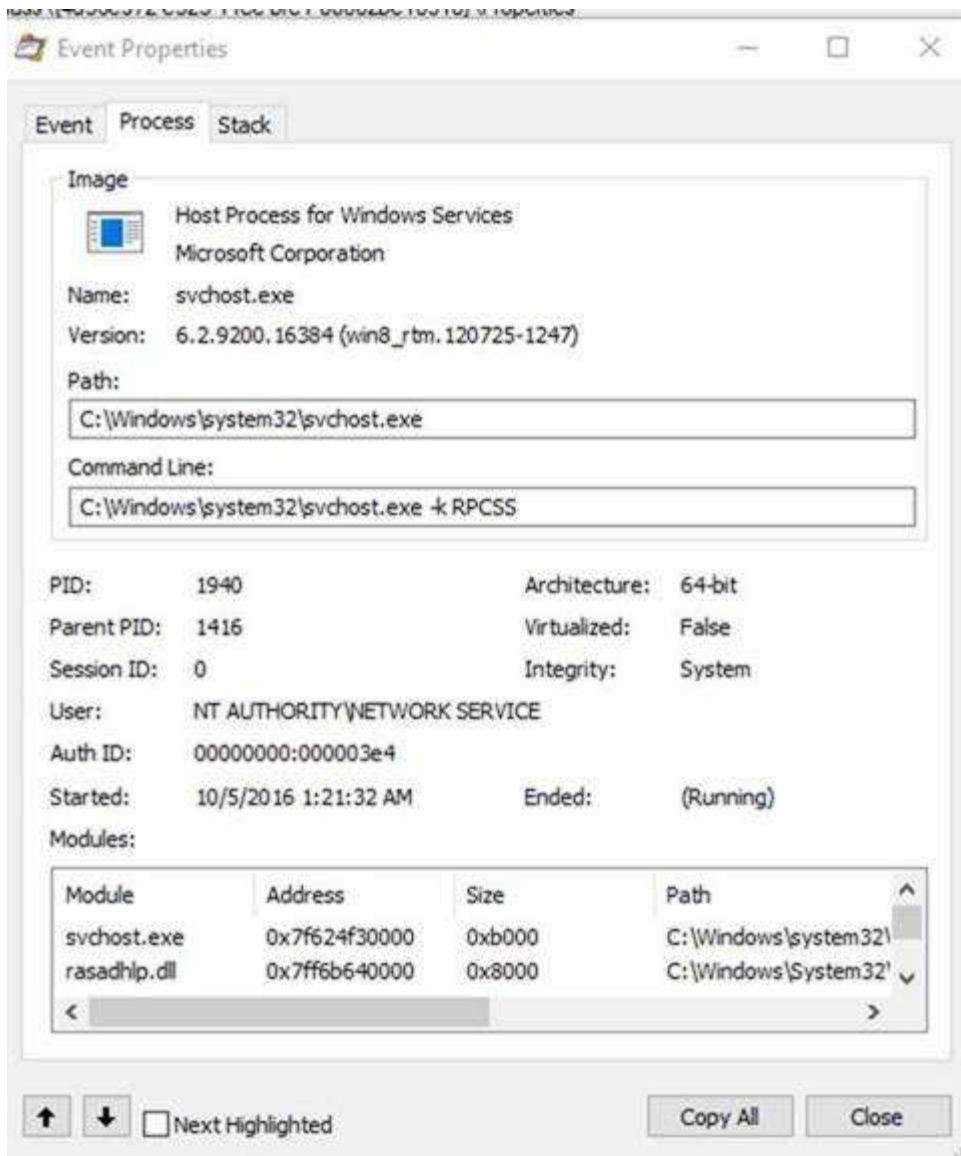
### Troubleshooting done:

- Since the issue started post Symantec upgradation, Symantec uninstalled and tried to start the VM's - **No luck**
- Checked WMI by opening run and type WBEMTEST then click on connect → type "root\virtualization" and click on connect. Let me know if it gives any error when you click on "Connect" -**WMI Working fine.**
- By referring few blogs, this issue may occur due to missing of permission in WMI so opened run and type dcomcnfg then go to -> Component Services -> Computers -> My Computer -> DCOM Config -> Windows Management Instrumentation -> Right Click, Properties -> Security "Launch and Activation Permission" -> Edit -> give "Authenticated Users" "Full Control" -- **Tried to start VM but no luck**
- As Server block execution failed to related permission issue, ran the procmon while starting to check access denied message

### **[Procmon]:**

```
5:27:09.3037986 PM svchost.exe 1940 RegOpenKey HKCR\AppID\{8BC3F05E-D86B-11D0-A075-00C04FB68820} ACCESS DENIED Desired Access: Read
```

```
5:29:47.9198905 PM svchost.exe 1128 RegOpenKey HKLM\System\CurrentControlSet\Control\Class\{4d36e972-e325-11ce-bfc1-08002be10318}\Properties ACCESS DENIED Desired Access: Read
```



By checking above and comparing with another working server , came to conclusion that below permissions are missing on WMI APP id

Added “Network service” & “CREATER OWNER” on following regkeys, give full control to check the behavior:

HKCR\AppID\{8BC3F05E-D86B-11D0-A075-00C04FB68820}

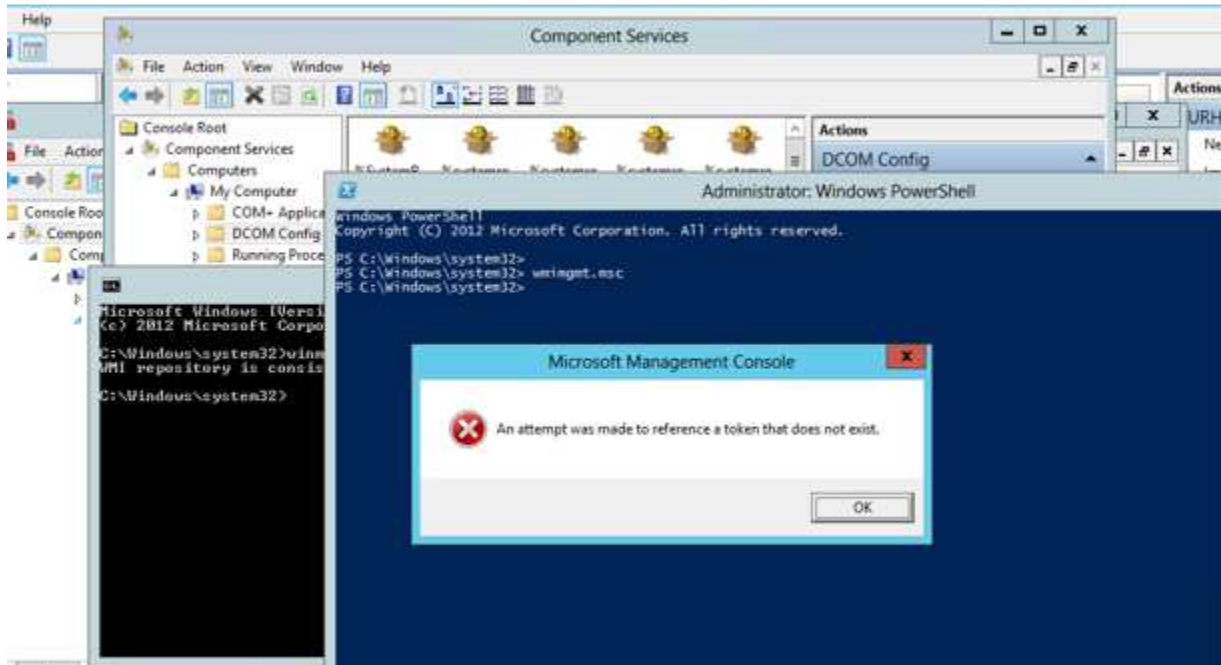
HKLM\System\CurrentControlSet\Control\Class\{4d36e972-e325-11ce-bfc1-08002be10318}\Properties

**Note:** if above does not work, try to give FULL CONTROL to Everyone on above resgity keys

Post giving permission, able to start VM on the host.

Also, observed few more errors with WMI, when we ran the WMIMGMT.MSC, below error is thrown.

Though WMI is working fine, below error is not expected and it may be due to some dll corruption.



To fix WMI and DCOM errors, we re-registered the dlls by running below command to resolve the issue for /f %s in ('dir /b \*.dll') do regsvr32 /s %s (change directory to System32)

```
Administrator: Command Prompt
C:\Windows\System32>regsvr32 /s Windows_Web.dll
C:\Windows\System32>regsvr32 /s WindowsCodecs.dll
C:\Windows\System32>regsvr32 /s WindowsCodecsExt.dll
C:\Windows\System32>regsvr32 /s winthe.dll
C:\Windows\System32>regsvr32 /s winhttp.dll
C:\Windows\System32>regsvr32 /s wininet.dll
C:\Windows\System32>regsvr32 /s wininitst.dll
C:\Windows\System32>regsvr32 /s winipsec.dll
C:\Windows\System32>regsvr32 /s Winlangdb.dll
C:\Windows\System32>regsvr32 /s winns.dll
C:\Windows\System32>regsvr32 /s winnhase.dll
C:\Windows\System32>regsvr32 /s WinNlsProtector.dll
C:\Windows\System32>regsvr32 /s winnsi.dll
C:\Windows\System32>regsvr32 /s WinOpenProtector.dll
C:\Windows\System32>regsvr32 /s winrm.dll
C:\Windows\System32>regsvr32 /s winrocd.dll
C:\Windows\System32>regsvr32 /s winrngp.dll
C:\Windows\System32>regsvr32 /s winrosv.dll
C:\Windows\System32>regsvr32 /s WinSCard.dll
C:\Windows\System32>regsvr32 /s winshfb.dll
C:\Windows\System32>regsvr32 /s winshu.dll
C:\Windows\System32>regsvr32 /s winsockh.dll
C:\Windows\System32>regsvr32 /s WinSRPC.Bll
C:\Windows\System32>regsvr32 /s winzpo.dll
C:\Windows\System32>regsvr32 /s winsta.dll
C:\Windows\System32>regsvr32 /s WinSunc.dll
```