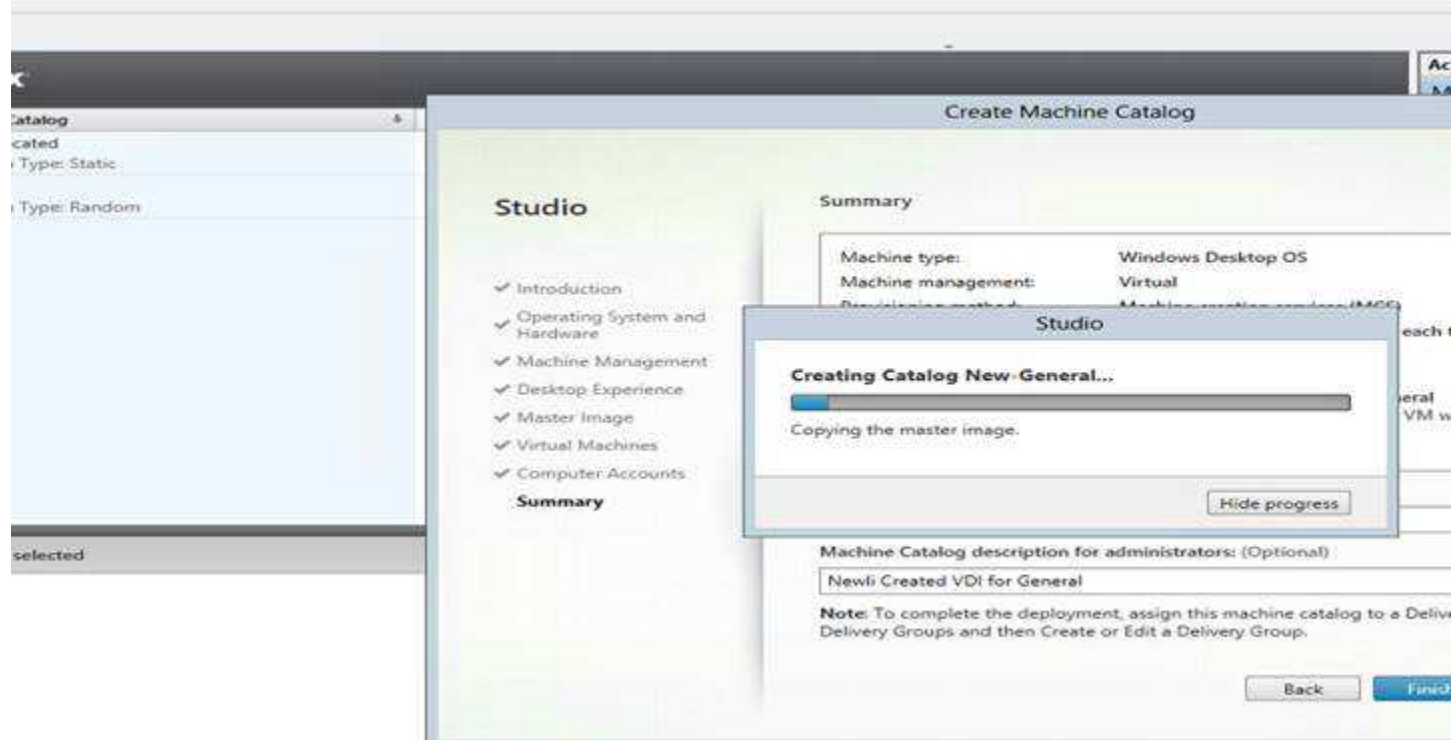
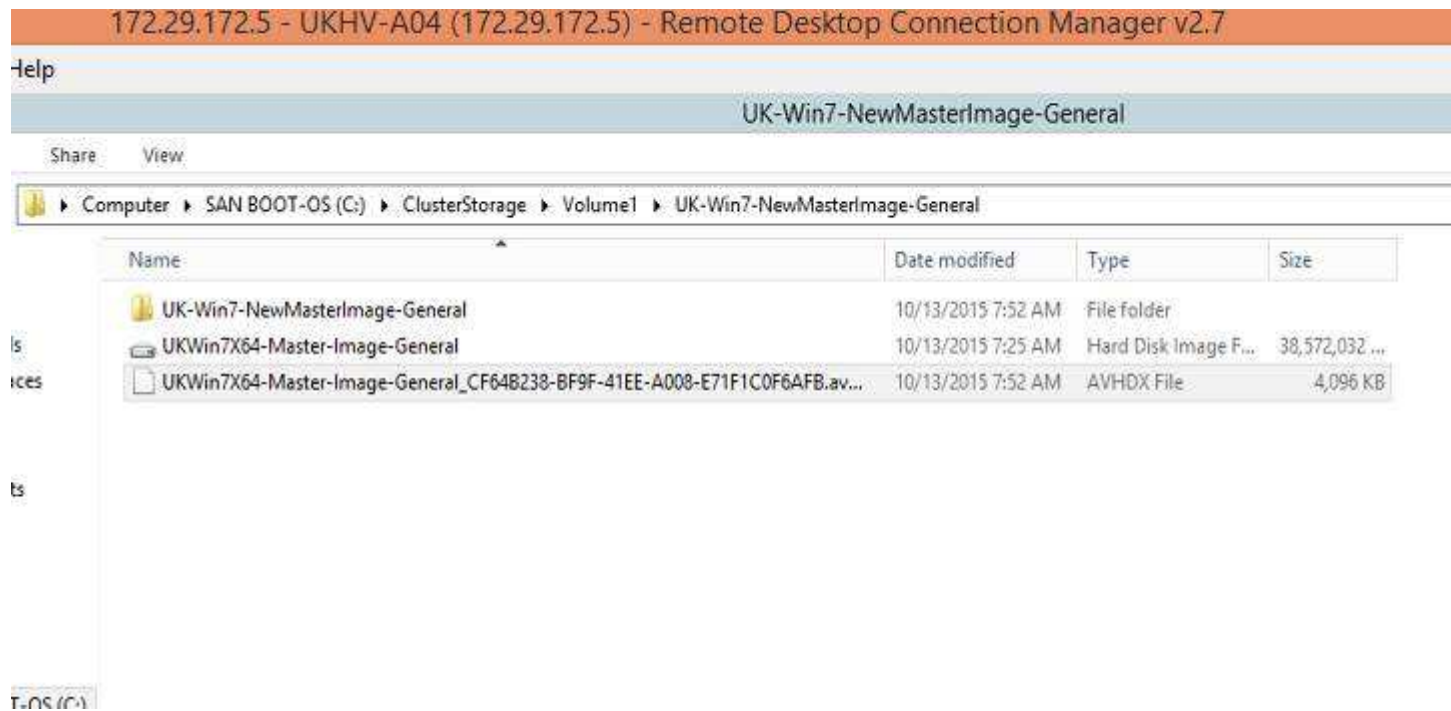
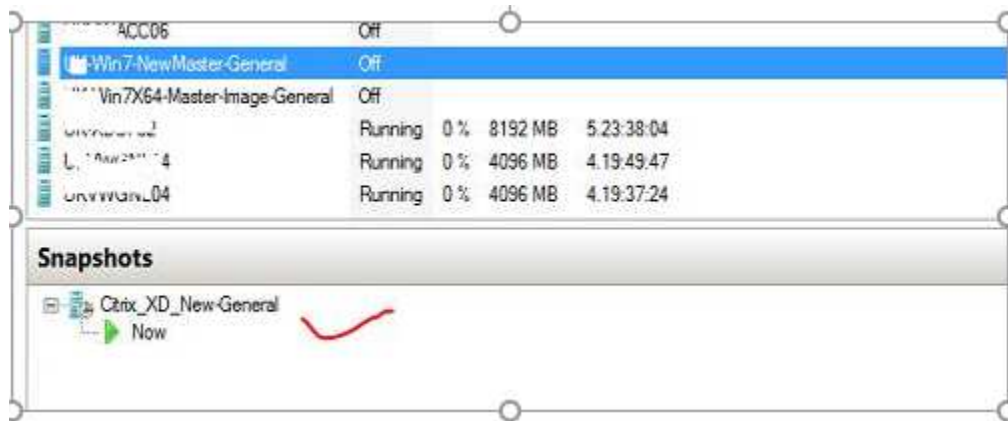


MCS Master Image Snapshot creation screenshots:

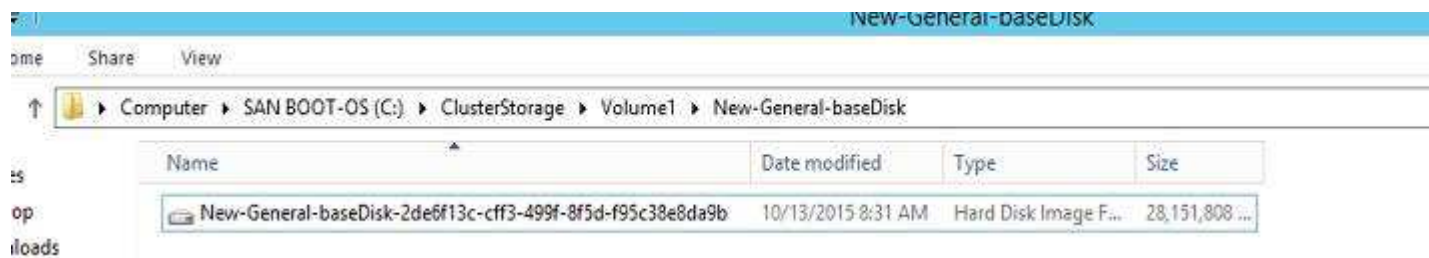


Snapshot creating while creating machine catalog



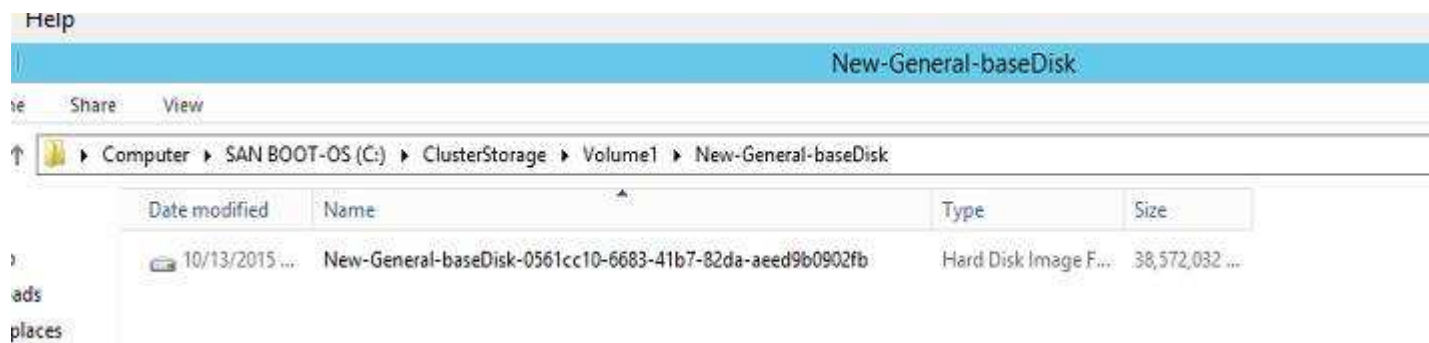


New disk created as part of machine catalog creation

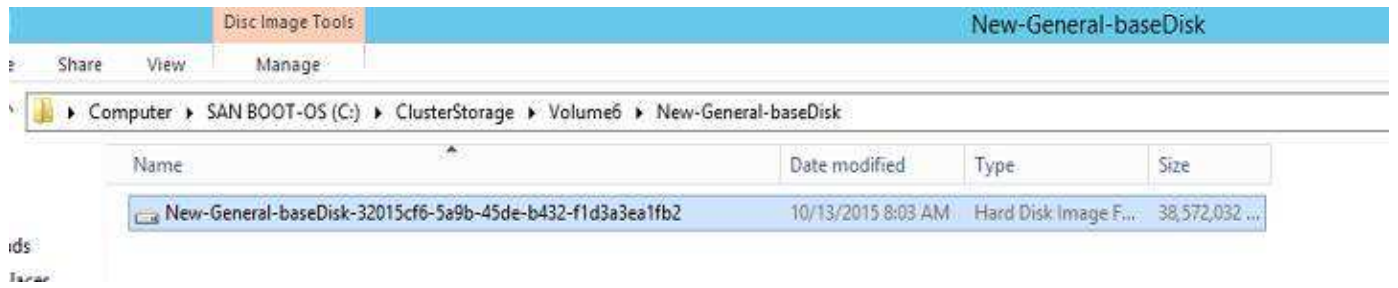


2 Files created in 2 Volumes - Reason id in Hosting Infrastructure, we have selected 2 Volumes

Volume1

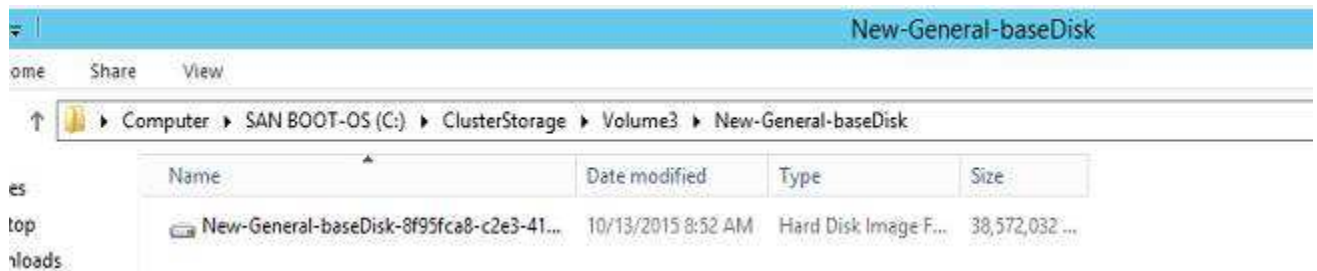
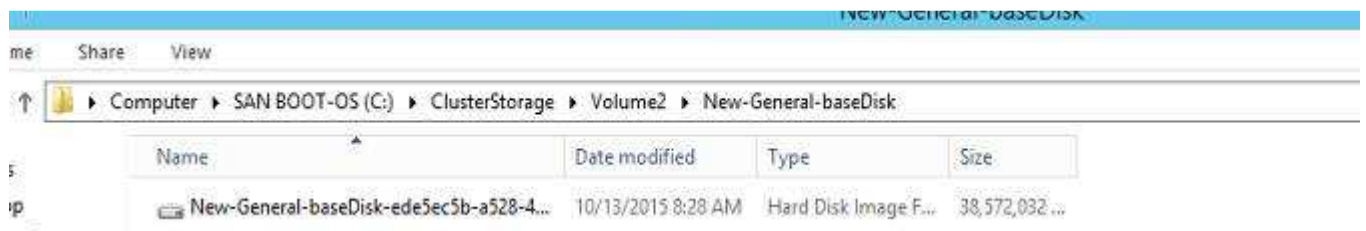
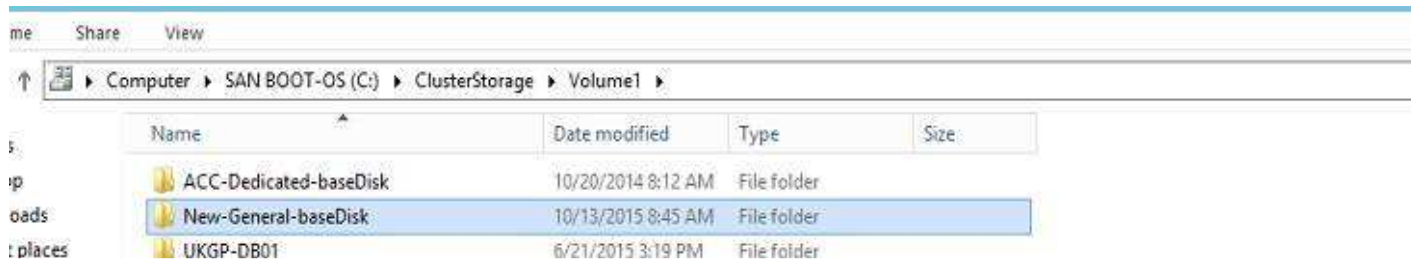


Volume 6



Now Selected all Volumes in Hosting infrastructure –

In all volumes , NewGeneral Base disk created and it may be problem with by selecting above..



New-General-baseDisk

Home Share View

Computer > SAN BOOT-OS (C:) > ClusterStorage > Volume5 > New-General-baseDisk

Name	Date modified	Type	Size
New-General-baseDisk-e7f94f9e-dcd2-44...	10/13/2015 9:06 AM	Hard Disk Image F...	38,572,032 ...

avorites
desktop
downloads
recent places

New-General-baseDisk

Home Share View

Computer > SAN BOOT-OS (C:) > ClusterStorage > Volume6 > New-General-baseDisk

Name	Date modified	Type	Size
New-General-baseDisk-32015cf6-5a9b-45de-b432-f1d3a3ea1fb2	10/13/2015 8:03 AM	Hard Disk Image F...	38,572,032 ...

favorites
desktop
downloads
recent places